

showerdome™

D.I.Y. INSTALLATION INSTRUCTIONS

Congratulations on the purchase of your Showerdome.

Please follow these instructions carefully.

If fitted correctly your Showerdome will keep your bathroom moisture free and you'll enjoy the benefits of a drier, healthier home.

WHAT YOU WILL NEED.

- Showerdome and Support rails (F rail)
- Tape Measure / Spirit level / Hacksaw (fine tooth) / Masking tape / Marker pen
- Jigsaw with a blade suitable for cutting acrylic (fine tooth / little set)
- Double sided tape / Clear Sealant (Trained installers use: Holdfast MS All Crystal Clear 202)
- Drill / Several stainless pan head screws

Please note: Showerdome is manufactured from high grade acrylic and can be easily damaged or cracked if not handled correctly, therefore we recommend installation by a trained Showerdome installer.

However, a handy person with the appropriate tools will be able to install their Showerdome successfully with care.

We assume you have chosen the correct size Showerdome for your application from the fitting chart on our website.

Please be aware, once you have made any cuts to the Showerdome it cannot be returned or exchanged.

These instructions are based on 2 tiled / lined walls, using an S700S Showerdome (700mm Showerdome on a 1000mm square blank).

If fitting to a shower with three walls (alcove), you will require an additional rail. Extra care will be needed

*with your measurements as you can't mark the overhanging material as in **STEP 4.***

The Showerdome should ideally be in the centre of the shower. Material may have to be trimmed from all sides in order to achieve this. However, in some instances (eg; low sloping ceiling or high shower head) it may be beneficial to off-set the Showerdome. We suggest you make a template of your shower (using the cardboard sheet in the packaging) including all your measurements, door position etc, as this will help you throughout the trimming and installation process.

It is important to note that a minimum of 35mm of the flange material must remain from the Showerdome strengthening lip on all sides of the Showerdome. This amount is required so the lip doesn't interfere when sliding the Showerdome into the 'F' rails and so the lip clears the shower framework.

STEP 1.

Before cutting, mark the cut lines with the marker pen. Be sure to measure the side dimensions **and the diagonals** to determine if the shower is square (most are not).

MEASURE TWICE – CUT ONCE.

Measure from the inside corner where the tiles / liner meet, to the inside of the door frame (eg 840mm). Then measure from the same corner to the inside of the glass wall frame. (eg 860mm).



STEP 2.

For the best result, mitre the 2 lengths of F rail so they meet in the corner, mark the rails and cut so they then butt up against the shower frame. Clean tiles / liner thoroughly and allow to dry.

Place a few lengths of double sided tape on each rail and run a bead of bathroom grade clear sealant / adhesive between the tape. Then attach to the walls one at a time ensuring they are level and the slots in the F rails are level with the top of the shower frame. You can then fill any small gaps where the rails meet with white sealant if desired.



STEP 3.

Place the Showerdome on a large flat surface. Your Showerdome comes with a layer of protective film on both sides which should be left in place while marking and trimming. Lay on an old blanket or sheet for further protection.

Mark the door side of the Showerdome (with a piece of masking tape) to avoid confusion during the cutting process.

Do not cut acrylic that is below 10°C.

If cutting in cold conditions we recommend gently warming the material with a hair dryer or heater. Only warm, do not overheat.

You need to cut the 2 sides that sit in the F rails first. Mark the side opposite the door for cutting. Subtract 840mm from the length of the total flange (ie 1000mm) which is 160mm, half of that means you need to cut 80mm off the flange opposite the door side.

We recommend you practice the cutting technique on a portion of the flange that will be cut to waste.

Mark with a straight edge and slowly and carefully start the cut using your jigsaw. When cutting, be sure to hold the edge of the material firmly so that it does not 'chatter' or vibrate with the saw blade.

Every 200mm cut back into the main cut line to reduce the weight of the material hanging from the cut.

This process is repeated on the side opposite the glass wall. This time the calculation would be 1000mm less 860mm, being 140mm. Half of that means you need to cut off 70mm.



STEP 4.

Using a small step ladder, slide the Showerdome into position so you can see down on top of the Showerdome. Use a straight edge to mark the two sides that will now be overhanging the shower door and wall frames. Make sure that the Showerdome has sufficient framework to sit on. Remove the Showerdome. Now cut these two marked sides in the same way as your previous cuts.



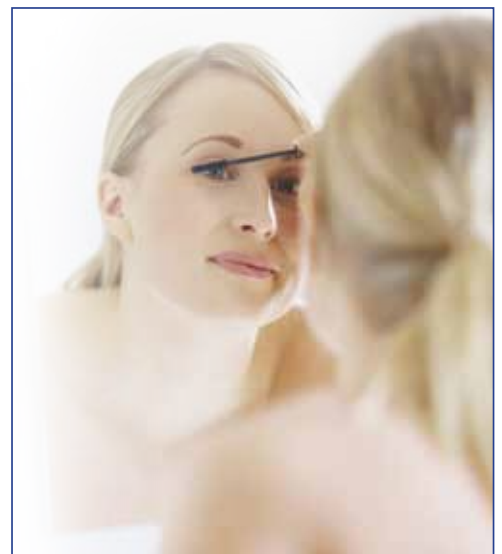
STEP 5.

Clean up any sharp edges with a scraper or sanding block and refit the Showerdome into position. Although the Showerdome will not physically move unless pushed, you can secure the Showerdome with several small screws drilled into the frame work. If doing so, make sure you drill a slightly larger size hole into the Showerdome to avoid screwing the screw through the acrylic and possibly cracking the material. Do not tighten the screws down against the Showerdome – they are location screws only and need to allow for expansion and contraction.

Congratulations, your Showerdome is now installed and ready to use.

Showerdome should provide a barrier between the warm, moist air inside the shower and the cooler air outside in the bathroom. All significant gaps around the door and Showerdome should be eliminated if possible. Please contact your local bathroom retailer for more information about door seals if required.

To achieve maximum efficiency, when showering, the door must be closed to stop warm air escaping the shower cubicle. On exiting the shower, close the door behind you and allow the warm air inside the shower to cool. Before leaving the bathroom, open the shower door slightly to allow the cubicle to dry.



Enjoy the benefits of a drier, healthier home with Showerdome

showerdome™

Phone 0800 541 22 33
www.showerdome.co.nz